



~Sq. Ft.: 1748
 Stories: 1.0
 Bedrooms: 4
 Master: Down

Baths (f/h): 2/0
 Garage: 2.0
 Price: \$171,990

Westheimer Lakes
Canyon Village at Westheimer
Lakes

From the \$160's

11439 Overland Trail Drive
 Richmond, TX 77406

Phone: (281)341-1299

Fax: (281)341-1642

Sales office hours:

Tues - Sat: 10 am - 7 pm

Sun - Mon: Noon - 7 pm



Ralph Bobo

Driving Directions

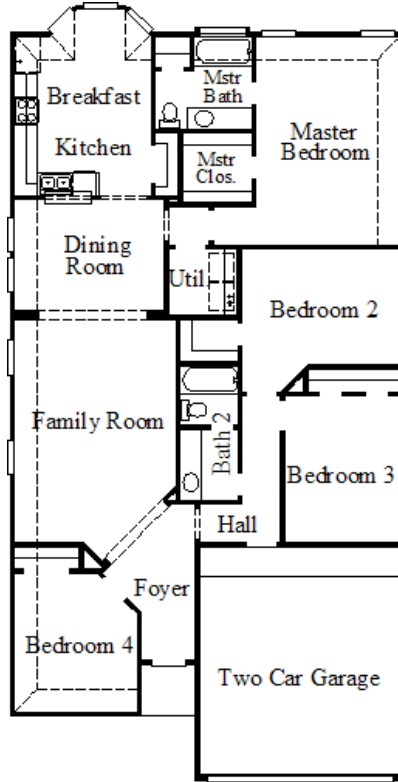
From I-10 West:

Exit Grand Pkwy. and travel South,
 Right on FM 1093,
 Travel 2 miles the entrance will be on
 your left,
 Left on Canyon Fields Dr.,
 Right on Lakefair Dr.,
 Left on Overland Trails Dr.

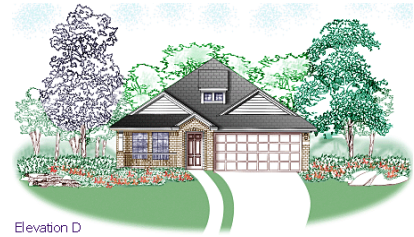
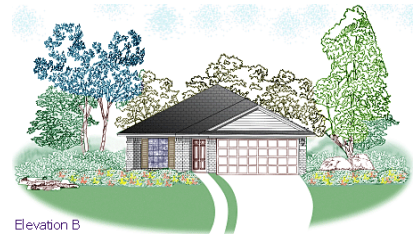
From Westpark Tollway West:

Stay on tollroad until the freeway ends,
 Travel 3.5 miles and entrance is on the
 left,
 Left on Canyon Fields Dr.,
 Right on Lakefair Dr.,
 Left on Overland Trails Dr.

4784 / Godfrey II

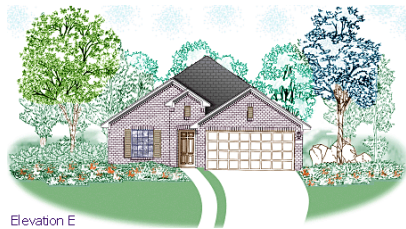


Available Elevations



Disclaimers, Terms and Conditions of Use.

Plans, specifications, community amenities, standard features, availability and prices are subject to change without notice. Calculations for square footage of these plans were made from exterior dimensions less attached garage, if appropriate. A/C square footage is the same area less thickness of exterior walls of the same area. Square footage calculations are made based on plan dimensions only and may vary from finished square footage of the home as built. The accuracy of property tax rates, homeowners' association fees, and school district information displayed on this web site is not guaranteed by MHI or any affiliated companies. This information has been provided by third parties and is subject to change without notice. It is recommended that you ascertain the correct property tax rates, homeowners' association fees, and school district information from the appropriate authorities before you make a decision to purchase. © 2006 - 2012 Pioneer Homes, All Rights Reserved. 5/21/2012

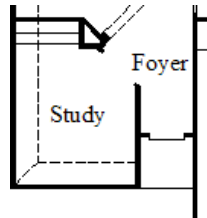


Elevation E

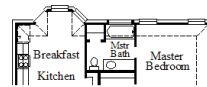


Elevation F

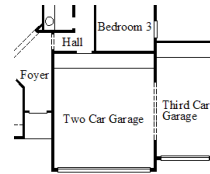
Available Options



Optional Study
(# 005)



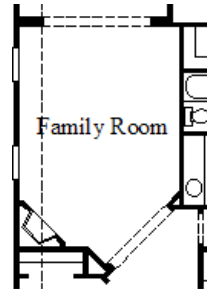
First Floor at
Optional Brick Back
(# 030)



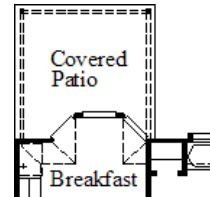
Optional
Third Car Garage
(# 045)



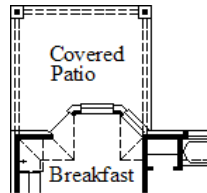
Optional
Separate Shower
(# 079)



Optional
Fireplace
(# 360)



Optional
Covered Patio
(# 621)



Optional Covered Patio
with Brick Back
(# 815)



Disclaimers, Terms and Conditions of Use.

Plans, specifications, community amenities, standard features, availability and prices are subject to change without notice. Calculations for square footage of these plans were made from exterior dimensions less attached garage, if appropriate. A/C square footage is the same area less thickness of exterior walls of the same area. Square footage calculations are made based on plan dimensions only and may vary from finished square footage of the home as built. The accuracy of property tax rates, homeowners' association fees, and school district information displayed on this web site is not guaranteed by MHI or any affiliated companies. This information has been provided by third parties and is subject to change without notice. It is recommended that you ascertain the correct property tax rates, homeowners' association fees, and school district information from the appropriate authorities before you make a decision to purchase. © 2006 - 2012 Pioneer Homes, All Rights Reserved. 5/21/2012