



# Westheimer Lakes Canyon Village at Westheimer Lakes

From the \$160's

11439 Overland Trail Drive  
Richmond, TX 77406

Phone: (281)341-1299

Fax: (281)341-1642

### Sales office hours:

Tues - Sat: 10 am - 7 pm

Sun - Mon: Noon - 7 pm



Ralph Bobo

### Driving Directions

#### From I-10 West:

Exit Grand Pkwy. and travel South,  
Right on FM 1093,  
Travel 2 miles the entrance will be on  
your left,  
Left on Canyon Fields Dr.,  
Right on Lakefair Dr.,  
Left on Overland Trails Dr.

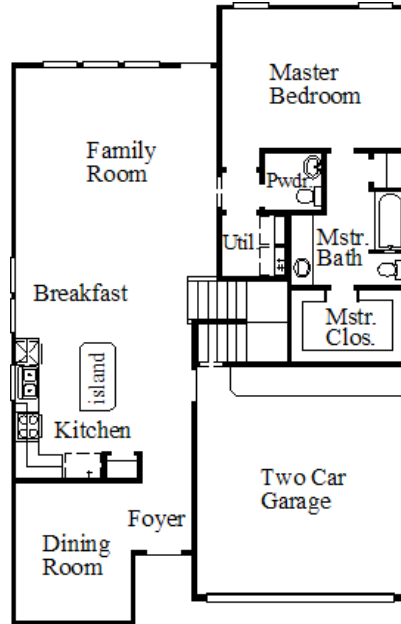
#### From Westpark Tollway West:

Stay on tollroad until the freeway ends,  
Travel 3.5 miles and entrance is on the  
left,  
Left on Canyon Fields Dr.,  
Right on Lakefair Dr.,  
Left on Overland Trails Dr.

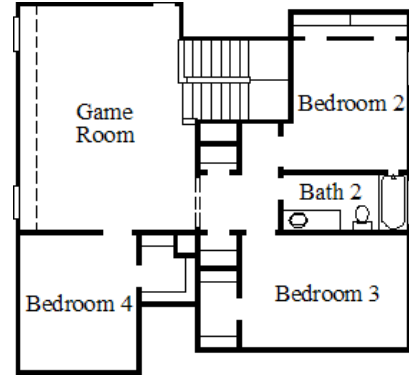
~Sq. Ft.: 2332  
Stories: 2.0  
Bedrooms: 4  
Master: Down

Baths (f/h): 2/1  
Garage: 2.0  
Price: \$194,990

## 4830 / Huntington V



First Floor



Second Floor

### Available Elevations



Elevation A



Elevation B



Elevation C



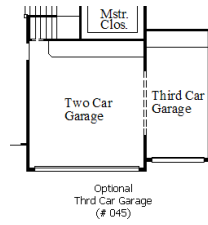
Elevation D

### Available Options

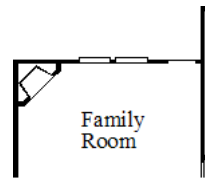


#### Disclaimers, Terms and Conditions of Use.

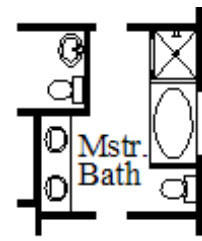
Plans, specifications, community amenities, standard features, availability and prices are subject to change without notice. Calculations for square footage of these plans were made from exterior dimensions less attached garage, if appropriate. A/C square footage is the same area less thickness of exterior walls of the same area. Square footage calculations are made based on plan dimensions only and may vary from finished square footage of the home as built. The accuracy of property tax rates, homeowners' association fees, and school district information displayed on this web site is not guaranteed by MHI or any affiliated companies. This information has been provided by third parties and is subject to change without notice. It is recommended that you ascertain the correct property tax rates, homeowners' association fees, and school district information from the appropriate authorities before you make a decision to purchase. © 2006 - 2012 Pioneer Homes, All Rights Reserved. 5/21/2012



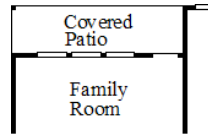
Optional  
Thrd Car Garage  
(# 045)



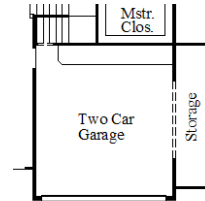
Optional  
Fireplace  
(# 054)



Optional  
Separate Shower  
(# 079)



Optional  
Covered Patio  
(# 621)



Optional  
5' Garage Extension  
(# 750)



**Disclaimers, Terms and Conditions of Use.**

Plans, specifications, community amenities, standard features, availability and prices are subject to change without notice. Calculations for square footage of these plans were made from exterior dimensions less attached garage, if appropriate. A/C square footage is the same area less thickness of exterior walls of the same area. Square footage calculations are made based on plan dimensions only and may vary from finished square footage of the home as built. The accuracy of property tax rates, homeowners' association fees, and school district information displayed on this web site is not guaranteed by MHI or any affiliated companies. This information has been provided by third parties and is subject to change without notice. It is recommended that you ascertain the correct property tax rates, homeowners' association fees, and school district information from the appropriate authorities before you make a decision to purchase. © 2006 - 2012 Pioneer Homes, All Rights Reserved. 5/21/2012